

FOUR4TH SCORCH INSTRUCTIONS



Operating

Touching the lens of the Scorch for 1.5 secs will activate the 'low' setting. Touching the lens once more will activate the 'high' setting. To turn the light off, touch and hold the lens for 1.5 secs. From the off position, touching and holding the lens for 3.5 secs will activate flashing mode. Touching the lens again will activate low, and touching again will activate high.

Mounting

Helmet: Place the bracket on your helmet and assess the best position. Having determined this, put one 'o' ring around one hook on the bracket. Place the bracket on the helmet and allow the 'o' ring to drop through one of the vents. Using your other hand, feed the 'o' ring back up through another vent and attach it around the same hook on the bracket. Repeat the process for the other side, using the second 'o' ring and pushing the mount towards the centre which will make the final connection easier. This needs to be tight and you may need to experiment to find the position that best suits your helmet.

Handlebars: Place the bracket on the bars and wrap the 'o' ring around the bar and into the recess on the rear of the bracket.

Rigid bracket: If you have opted for this optional extra bracket, attach it to your bars using 3mm allen bolts. Take care not to over-tighten.

When mounted on any of the brackets, Scorch has 5 positions in the horizontal plane: central, and two clicks either way.

Engaging the unit

Position the bracket so that the rounded part faces forwards. Hold the light so that if it were lit the beam would point to the left or right of you. Locate the boss nearest the collar on Scorch and slide it into the recess on the bracket. Gently rotate the light until it makes contact with the sprung-loaded bearing. At this point push down to depress the bearing and rotate two clicks to put the light in its central position.

Disengaging the unit

From the central position, three clicks to the left or right will disengage Scorch and it can be slid away from the bracket.

Run times

Scorch will run for up to:

2600 mAh smallest battery black collar

1hr 10mins on high power
3hrs 20mins on low power

3100 mAh medium battery red collar

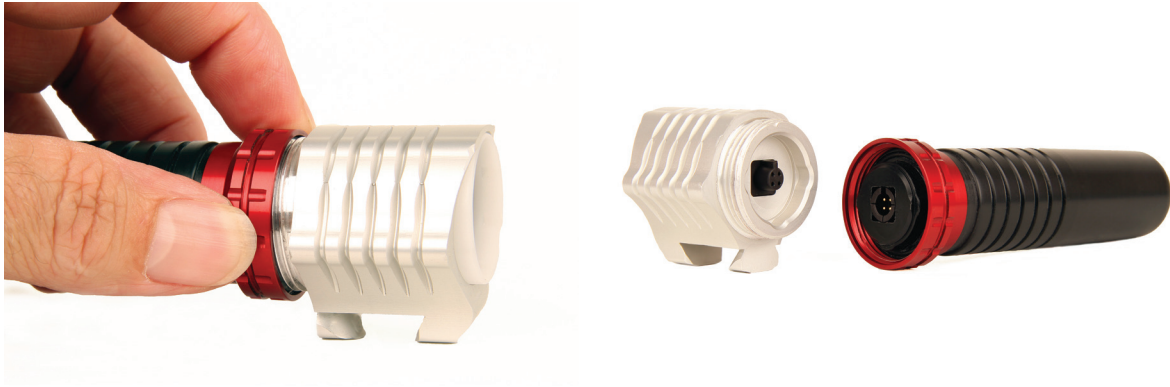
1hr 20mins on high power
4hrs on low power

3400 mAh large battery silver collar

1hr 30mins on high power
4hrs 20mins on low power

After this time Scorch slowly diminishes in power, rather than cutting out immediately. When you have insufficient light you should unscrew the battery and replace with a fully charged battery.

FOUR4TH SCORCH INSTRUCTIONS



Charging the battery

Scorch comes with a plug-in charger. It will take 3–4 hours to charge completely from when it is fully discharged. To help extend the long term life of the Li-ion battery, charge the light when it is almost depleted.

Disconnect the light from the battery by unscrewing the slotted collar and firmly pulling the lens section and the battery apart. (The action is a direct pull and not a wobble side-to-side pull, which would weaken the pins.) Plug the FOUR4TH battery charger into the mains and the small LED on the front will glow green. Attach the cable to the battery by aligning the notch on the connector with the corresponding slot on the battery. Gently rotate the cable until you feel alignment, then push home – you will hear a click. The LED on the charger will now show red. When a full charge is attained (after 3–4 hours) the LED will show green. Disconnect the battery from the charger and unplug the charger from the mains.

Reattach the battery to Scorch by aligning the notch on the lens section with the slot on the battery. When you feel alignment, push home – you will hear a click. Tighten the collar by screwing it fully towards the lens, in order to ensure a watertight seal.

Important battery information

Only use the dedicated FOUR4TH battery charger. Using any other charger can cause explosion.

Never throw, drop or crush the lithium ion (Li-ion) battery and do not allow it to come into contact with sharp objects. Always disconnect the charger from the light when you are not using it. Incorrect use of the battery can cause fire, explosion or leakage. It is advisable to use a Li-po sack while charging, and never leave unattended. Never charge Scorch while it is attached to your bike. It is considered good practice to only charge your light in a room that is fitted with a smoke detector.

Caring for your Scorch

Wipe clean with dry cloth. Remove from your bike before jet washing. Store in a dry place. Keep spare batteries in a clean, sealed bag, to prevent debris and water from contaminating the connectors. When changing a battery mid-ride, replace the depleted battery back into the clean bag.

Note

Due to the characteristics of touch screen technology, you should not rely on Scorch as your only light source.